



**ANNUAL  
IMPACT REPORT  
2022-23**



**TREES  
FOR  
CITIES**

# CONTENTS

MESSAGE FROM THE CEO	03
OUR IMPACT	04
BREAKING DOWN BARRIERS TO NATURE	
Trees for Climate Action	06
Language of Nature	08
Ealing Tree Festival	10
Philpot's Farm	12
GREENING THE GREY	
Forgotten Places	14
Racecourse Estate	16
Tower Hamlets	18
Glasgow City Region	20
INSPIRING THE NEXT GENERATION	
Raynham Primary School	22
Abbey Mead Primary Academy	24
Town Farm Primary School	26
Cardiff Schools Programme	28
School Forest Kenya	30
CONNECTING THE NATION TO TREES	
Tree Cities of the World	32
Trees for Streets	34
The Queen's Green Canopy	36
The Masked Dancer	38
BUSINESS IMPACT	40
FINANCIAL SUMMARY	42
SUPPORTERS AND PARTNERS	44



## MESSAGE FROM THE CEO



In the midst of a climate catastrophe — after the hottest summer on record with devastating wildfires across Europe and Canada, and 10,000 Emperor Penguin chicks drowning due to melting Antarctic sea ice — it's a challenge not to lose hope.

needed most, transforming local spaces, galvanising communities, and making a difference. The trees we plant won't stop climate change, but unless we collectively empower people and communities to take action for nature, very little will change.

showcases our model for strategic evidenced-based planting, demonstrating how urban forestry can play a vital role in the green recovery of our coastal heritage, which have suffered disproportionately from lack of investment and opportunity.

**“ THIS IS THE FIRST YEAR OF DELIVERING OUR TURN OF TREES STRATEGY, WHICH PROVIDES A STEADFAST FRAMEWORK WITHIN WHICH TO STRIVE TOWARDS OUR GOAL OF CREATING HEALTHY, RESILIENT, ACCESSIBLE URBAN FORESTS FOR ALL. WE RETAIN A CLEAR FOCUS ON WHAT WE DO BEST, AND WE REMAIN COMMITTED TO JOINING FORCES WITH OTHERS TO AMPLIFY OUR IMPACT. ”**

We're particularly proud of the innovative projects featured in this report — Trees for Climate Action, Language of Nature, Tree Cities of the World, Healthy Playgrounds, Trees for Streets and more — all of which seek to engage new and diverse audiences to our cause in fun, creative, and meaningful ways.

I want to pay sincere and heartfelt thanks to our dedicated staff, trustees, volunteers, partners and funders; everyone who works with us to make our towns and cities greener, cooler and leafier, adapting them to climatic changes and making them more resilient for future generations to enjoy.

**KATE SHELDON,  
CHIEF EXECUTIVE**

Planting trees plants hope for the future. The simple but powerful act of planting a tree is a gateway to inspire more people to take action. Trees for Cities continues to deliver with unwavering commitment to plant and establish urban trees where they are

2022-23 saw the culmination of some impactful multi-year programmes, including the first phase of urban forestry in coastal towns and cities. Working alongside local authorities and project partners, the “Forgotten Places” project

## SCHOOLS

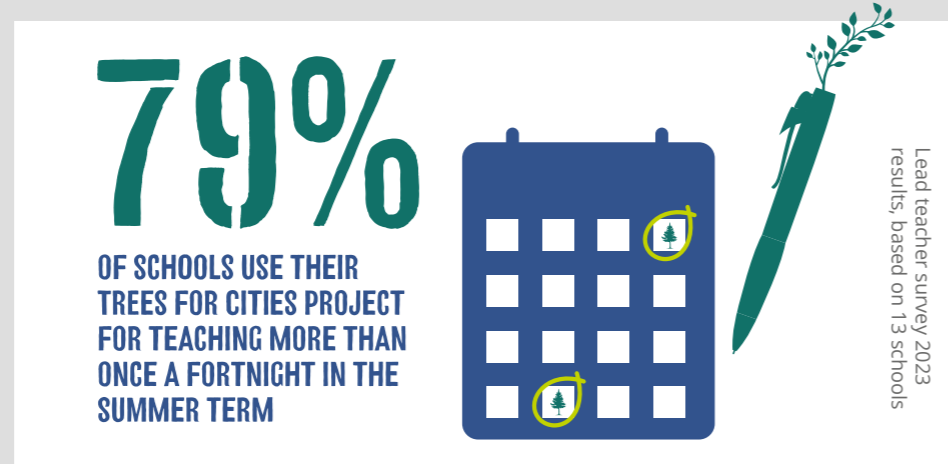
Through our Schools Programme, we have provided pupils with opportunities to learn and play outdoors in areas of high quality greenspace. We surveyed lead teachers at 14 schools who were engaged in Edible Playground, Planting Healthy Air and tree planting or forest garden projects in 2022/23.

In terms of teaching and learning, most schools use their project space for science (79%), art (64%) and maths and English/literacy (57%) and have included the Trees for Cities project in their termly curriculum plans (79%) and school improvement plans (57%). The new project spaces are also used for extracurricular activities (e.g. gardening club). The majority of schools use the project space more than once a fortnight for teaching, during the summer term. Most schools are using their project space at playtime and lunchtime.

All lead teachers felt that the Trees for Cities project is important to pupils and felt confident that projects will be sustained over the next five years.



# OUR IMPACT

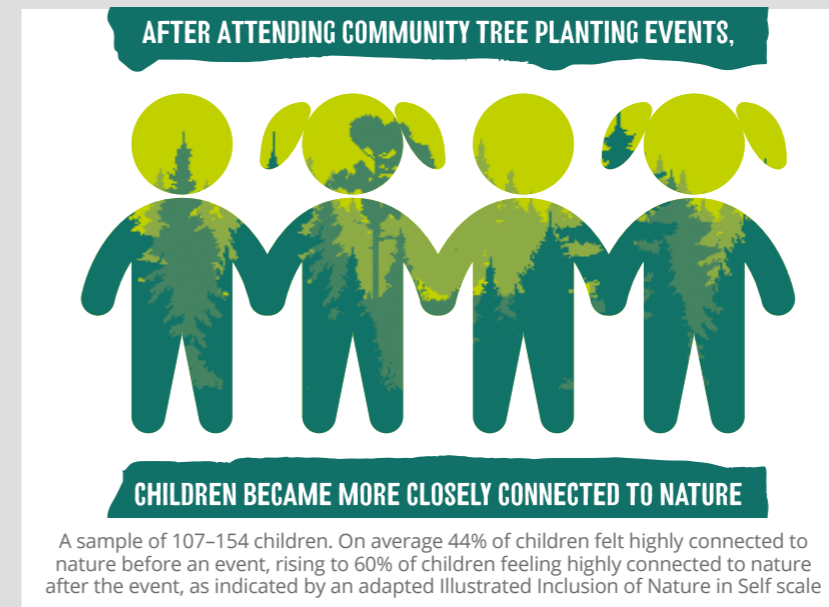
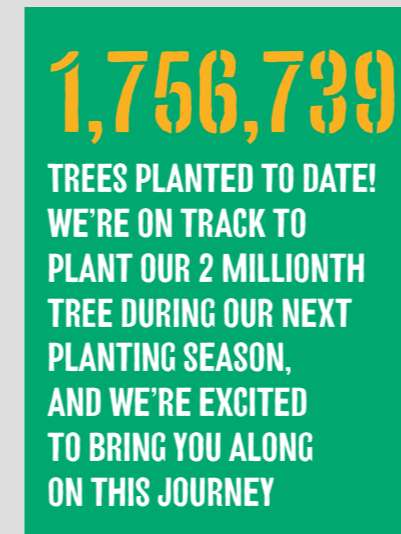
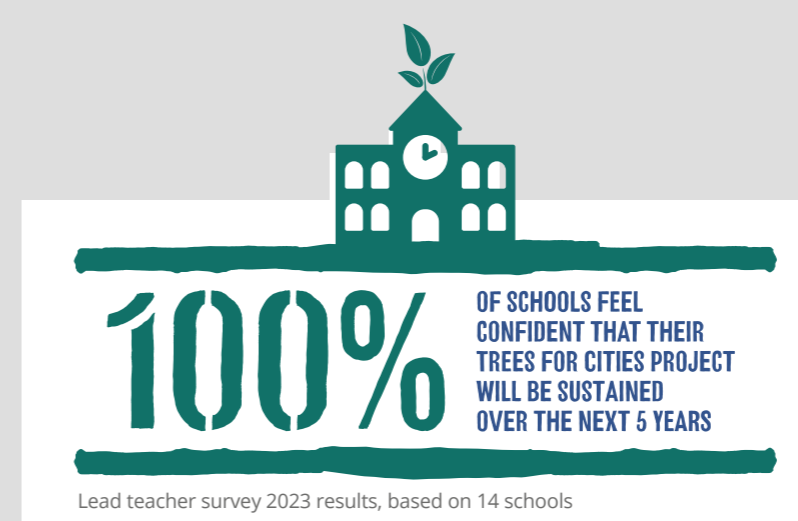


## URBAN FORESTS

Our impact results indicate that most community volunteers taking part in our Urban Forest Programme had never planted or looked after trees before, showing that we provide new opportunities to engage with trees and nature. On average, teenage or adult volunteers already value urban trees and are highly connected to nature before attending an event but most had no previous experience. Volunteers' confidence, knowledge and skills to plant and look after urban trees increased and on average, children became



more closely connected to nature from taking part in our events. Most volunteers said they had new plans to plant, take care of and/or promote urban trees in the next year after attending one of our events.



## BREAKING DOWN BARRIERS TO NATURE

# TREES FOR CLIMATE ACTION



We launched Trees for Climate Action in collaboration with several of our partners, bringing people together with tree-related activities in both Bradford and Glasgow.

A key goal of this project is to be intergenerational, giving young people up to the age of 30 the opportunity to expand their knowledge and learn new skills from older environmental professionals working in the sector. In this setting, participants can get involved in tree planting, training and volunteering, equipping them with vital skills to help tackle the climate crisis.

We launched Trees for Climate Action at two locations: at Bradford City Hall and Glasgow City Chambers respectively, introducing a variety of stakeholders and local authority contacts to the project.

To gauge interest and incorporate a diverse range of viewpoints that represent the locations into the project implementation, we consulted people across different groups: youth, faith, education, climate action, health and wellbeing to name a

# 20,000

**YOUNG PEOPLE HAVE THE CHANCE TO PARTICIPATE IN THE PROJECT IN BRADFORD AND GLASGOW UNTIL SEPTEMBER 2025.**



few. This period included a focus group at Noble Primary School in Bellshill, where we asked pupils what tree-related activities they would be most interested in, and any barriers that could be removed.

In March 2023, we spent a day at Cliffe Castle in Bradford with primary school pupils for a day discovering biodiversity and ecosystems, considering how species critically support each other in an interactive setting. At Battlefield Primary School in Glasgow we ran a session on the importance of trees, answering all questions the pupils had on trees and tree planting, and tasked them to locate potential tree planting sites near the school.

With two years still left of the project, there are plenty more upskilling opportunities in the pipeline.



## THANKS TO OUR FUNDERS

- National Lottery Community Fund (Bringing People Together)
- City of Bradford Metropolitan District Council
- Bradford Council Department of Public Health (My Living Well initiative)

## THANKS TO OUR PARTNERS

- Field Studies Council
- Fruitworks
- YORGreenCIC
- Glasgow City Council
- South Lanarkshire Council
- North Lanarkshire Council
- East Renfrewshire Council
- Renfrewshire Council
- Clyde Climate Forest

## BREAKING DOWN BARRIERS TO NATURE

# LANGUAGE OF NATURE



Language of Nature focuses on how best we can connect people with disabilities with nature conservation and restoration, with a focus on the role communication plays on a person's engagement with nature. We joined the two-year programme in 2021 and we are responsible for the delivery of the initiative in London, having received comprehensive training on sensory engagement with nature for children with special needs, disability awareness, and what causes language barriers. We have focused on BSL, Braille, Makaton, Widgit, and Easy English, and have been assessing how we can utilise these communication tools as part of our community engagement and school workshops.

Our engagement with communities across the UK demonstrates how language can be a barrier to connecting with nature and the outdoors for people with disabilities. This project has been a great opportunity to create more inclusive and meaningful experiences for the communities we work with.

Across the 22/23 planting season, Trees for Cities delivered planting workshops for SEN schools and colleges, with more sign-up requests for the upcoming season based on positive feedback.

On the ground we have organised more accessible planting events: we had a BSL



interpreter at our Victoria Park community planting day, which we'll look to include at future events upon request. We share accessibility information online, ensure accessibility-trained staff for our planting days, and do a thorough post-event review. We've also created new resources for community workshops and events, which we continually evolve based on feedback.

We are working to ensure that accessibility is becoming more integrated into every step of our programmes. Planting 'Urban trees for all, by all' underpins everything that we do, including striving for better accessibility practices.



## THANKS TO OUR FUNDERS

- Sensory Trust

## BREAKING DOWN BARRIERS TO NATURE

# EALING TREE FESTIVAL



In May 2022, we worked in partnership with the London Borough of Ealing and Heathrow Community Trust to deliver the first ever Ealing Tree Festival. Having established over 47,000 trees across the borough, the festival was a chance to continue inspiring local residents and celebrate our urban trees!

Over 250 local residents attended across the two days at Southall Park and Litten Nature Reserve, the majority of people travelling half an hour or less to reach the festival. Through educational activities and informative exhibits, we promoted the positive impact of trees



# 73%

**OF A SUBSET OF ATTENDEES SAID THEY HAD NEW PLANS TO PLANT, TAKE CARE OF AND/OR PROMOTE URBAN TREES IN THE NEXT YEAR.**

**“ TREES FOR CITIES WOULD LIKE TO GIVE A SPECIAL THANKS TO EALING AND THE WHOLE COMMUNITY FOR CELEBRATING URBAN TREES AND THE ESSENTIAL ROLE OF HIGH-QUALITY GREEN SPACES IN OUR DAILY LIVES, PARTICULARLY IN URBAN SETTINGS. ”**

Louise Purnell, Senior Engagement Manager at Trees for Cities



in the borough on wildlife and biodiversity, community wellbeing, and in mitigating the effects of climate change.

We hosted a range of activities: tree walks showcasing the benefits of different trees and associated biodiversity, and opportunities for children to learn about trees through games, crafts and storytelling, with the aim of inspiring a new generation to plant and protect urban trees. Most people surveyed said they learned something new, developed a new skill or learnt about new opportunities to get involved in tree related activities from

the festival (71% and 59% of 41 participants, respectively), and people reported urban trees being more important to them after the event.

'Right Tree, Right Place' was a focal point at the festival to advise residents on species selection in gardens and on private land. 66% of 41 people surveyed at the festival had new plans to plant a tree in their garden or allotment. We worked with The Tree Council to encourage attendees to get more involved in tree planting and tree care across the borough, including joining a Tree Warden scheme.

## THANKS TO OUR FUNDERS

- Ealing Council
- Heathrow Community Trust

## THANKS TO OUR PARTNERS

- ParkPlay
- Let's Go Southall
- Friends of Litten Nature Reserve
- Pitshanger Poets

BREAKING DOWN BARRIERS

# PHILPOT'S FARM



As part of our three year partnership with the London Borough of Hillingdon, we have worked together strategically to improve habitats and ecosystems throughout the borough, by creating new areas of tree and woodland cover.

Philpot's Farm Open Space was identified as having a canopy cover at 10–20%, below the 21% London average.

We planted 6,200 whips for woodland creation and 18 standard trees, and implemented 600m<sup>2</sup> of fenced off areas for natural regeneration. This area was a prime spot for natural regeneration, with existing areas of woody scrub which we have fenced off to give them the chance to expand, providing benefits for wildlife. We have been maintaining the trees since they were planted in the winter. In total we engaged 277 people at Philpot's Farm Open Space, through an open community planting day, and planting workshops with a Refugee Centre, St Matthew's CoFE Primary School and local SEN school The Pride Academy.

# 4,475 M<sup>2</sup>

OF WOODLAND HAS BEEN CREATED BY US AT PHILPOT'S FARM — THAT'S EQUIVALENT TO 17 DOUBLE TENNIS COURTS!

“ WE WERE JOINED AT THE COMMUNITY PLANTING DAY BY PARTICIPANTS FROM OUR YOUTH PROGRAMME, WHERE THEY LEARNT ABOUT PLANTING STANDARDS AND WHIPS, TREE TOOLS, CAGING AND STAKING, GROUND PREPARATION, WATERING AND MULCHING. ”

Susannah Littlewood, Senior Partnerships and Development Coordinator at Trees for Cities

We also held five corporate volunteering planting days, and three planting days with the Ministry of Justice Community Payback scheme. Community and corporate volunteers told us what changed for them at these events. 62% of volunteers planted a tree for the first time, and 90% of volunteers said they had learnt something or developed new skills about planting and looking after urban trees (from samples of 90 and 49 volunteers respectively).

We worked with the Sensory Trust at the school workshops and the community planting day as part of the Language of Nature project. Together we tested out resources to make our events more accessible, communicating about our project using Makaton and Widgit Symbols and emphasising the multi-sensory experience of planting trees.

“ I WILL PLANT MORE TREES WHEN GO BACK HOME TO PRACTISE MY NEWLY LEARNT SKILL. ”

Volunteer at our planting day



## THANKS TO OUR FUNDERS

- The Greater London Authority: Grow Back Greener 2022/23
- Hillingdon Council
- Trees Call to Action Fund
- The Department for Environment, Food & Rural Affairs
- The Forestry Commission
- The National Lottery Heritage Fund
- Rogers Stirk Harbour + Partners
- Accept & Proceed
- Panorama Antennas

## THANKS TO OUR PARTNERS

- London Urban Forest Partnership

GREENING THE GREY

# FORGOTTEN PLACES



# 69,842

TREES PLANTED IN PARTNERSHIP ACROSS THE MULTI-YEAR PROGRAMME, WITH 20,118 PEOPLE ENGAGED VIA COMMUNITY PLANTING EVENTS, TREE ID GUIDES, TRAINING AND CELEBRATION EVENTS.

We want to ensure no community is left behind as we work to plant urban trees across the UK. Through Forgotten Places, Trees for Cities helped local authorities who may have lacked either the resources or capacity to increase their urban trees; planting in coastal towns and cities with 10% canopy cover or less.

Trees for Cities and partners have planted 69,842 trees across 79 locations in seven coastal areas, with 16,000+ trees taking root last season across Bexhill, Brighton, Great Yarmouth, Hull, Portsmouth, Ramsgate and Stockton. This

project showcases our model for strategic evidenced-based planting, demonstrating how urban forestry can play a vital role in the green recovery of our coastal heritage, which has suffered disproportionately from lack of investment and opportunity. Key highlights of the project were the creation of new green jobs and the power of quality partnerships.

12 new jobs were created, 36 retained and 17 trainees were hired. Staff reported developing new knowledge and skills, whilst trainees gained a greater awareness of jobs in the green sector.

“ THIS PROJECT REPRESENTS A FANTASTIC STEP TOWARDS REBALANCING THE UK’S CANOPY COVER BY PRIORITISING SOME OF OUR FORGOTTEN COASTAL TOWNS AND CITIES, AND TACKLING GREEN INEQUALITY AND DEPRIVATION FOR THOSE MORE LIKELY TO FACE BARRIERS TO ENVIRONMENTAL JUSTICE.

David Elliott, former CEO at Trees for Cities



Last season saw the culmination of our deep dive work in Bexhill, and we produced a Bexhill Tree Planting Strategy in collaboration with partners at Treeconomics. To help support partners navigate the planting challenges presented by coastal environments, we published our Tree Planting in Coastal Towns and Cities Guide, developed in collaboration with Forest Research. The programme was celebrated in our Trees Breathe Life campaign, calling on the public to share the importance of trees in their coastal towns and cities.

The project has been particularly successful in engaging people with little or no experience of tree planting. We are continuing to partner with ever more people and authorities — both coastal and inland — to ensure trees are planted where they are needed most in towns and cities.

## THANKS TO OUR FUNDERS

- Green Recovery Challenge Fund: The Department for Environment, Food & Rural Affairs, Natural England, Environment Agency, Forestry Commission and The National Lottery Heritage Fund
- Players of the People's Postcode Lottery; Postcode Green Trust
- The Queen's Green Canopy

- The Hippy Shake
- Assured Guaranty
- Golden Acre Foods
- AXA
- GF Smith
- Inside Out Contracts Ltd
- Elephant Box
- Associated British Ports
- RSM UK Foundation
- Hays
- Burger King UK (BK UK Group Limited)
- Green Park
- Paint the Town Green

## THANKS TO OUR PARTNERS

- Brighton & Hove City Council
- Great Yarmouth Borough Council
- Hull City Council
- Portsmouth City Council
- Rother District Council
- Thanet District Council
- Stockton-on-Tees Borough Council
- Field Studies Council
- Treeconomics
- Forest Research
- CPRE Sussex
- Enterprise (in partnership with the Arbour Day foundation)

- Sapling Spirits
- WPJ Heating
- Hubspot
- Wild Earth
- Topline
- Fisher Productions
- Peep Eyewear
- British Acupuncture Council
- IX Marketing Limited
- Woodwarm
- Ecosia
- Bauder
- Greenzone
- Paxton and Whitfield
- Air and Grace
- NU Construction
- Fluid



## GREENING THE GREY

# RACECOURSE ESTATE



Racecourse Estate is a large social housing estate in Northolt, and was the location for a pilot multi-year estate greening project between 2019-2023.

The pilot aimed to deliver a set of complementary year-round greening activities on one site over multiple years and to create and improve high quality green spaces across an area in an integrated way with the local community. We collaborated with stakeholders and community groups focusing on tree planting, co-design, play and

sustainable, active community involvement beyond the programme timeframe through establishing a community greening group 'Green Shoots' with the Freshwater Foundation.

Over the four years, Trees for Cities transformed the estate by planting 914 trees and 17,200 bulbs. We added 15 benches, 15 oak raised beds for growing flowers and food, and five oak picnic benches with adjoining raised beds — plus a trim trail! We also installed three sculptures and two oak archways.



Image produced with our partner Climate Cartographics at the University of Westminster

“ I'VE ALWAYS HAD AN AFFINITY WITH WOODS AND TREES, AND FELT VERY MUCH THAT TREES FOR CITIES HAVE GIVEN A VERY GOOD IMPULSE TO THE AREA BY PLANTING TREES AND GETTING PEOPLE INVOLVED. I FELT IT WOULD BE A SHAME FOR US NOT TO TAKE SOME POSITIVE STEPS FROM THERE TO KEEP LOOKING AFTER THE TREES. ”

Green Shoots member



## THANKS TO OUR FUNDERS

- National Lottery Community Fund
- Forestry Commission: Urban Tree Challenge Fund
- Ealing Council
- Department for Environment, Food & Rural Affairs, National Lottery Heritage Fund and Mayor of London: Trees Call to Action Fund
- City Bridge Trust
- Stanley Smith UK Horticultural Trust
- All Aboard Shops LTD
- Heathrow Community Trust — Environment and Sustainability

## THANKS TO OUR PARTNERS

- Climate Cartographics
- Freshwater Foundation

GREENING THE GREY

# TOWER HAMLETS



“ THIS IS MY SECOND TREE PLANTING DAY IN TWO MONTHS! I’VE LEARNT A LOT, AND IT’S BEEN GREAT TO HAVE ANOTHER OPPORTUNITY TO PUT WHAT I LEARNT THE FIRST TIME TO THE TEST. ”

Volunteer at our Victoria Park community planting day



trees took root across 19 different species, made possible alongside 178 volunteers.

Two-thirds of volunteers had not planted or looked after trees before, and from taking part in our events, 83% of volunteers said they had new plans to plant, take care of and/or promote urban trees in the next year (from samples of 115 and 71 people respectively).

We also delivered 17 school workshops across Tower Hamlets to educate students on the many benefits that can be derived from the urban trees in their area.

Our work to green Tower Hamlets wouldn’t have been possible without the support of the Tower Hamlets community. We worked with local community groups, school children, residents, and businesses to transform many of the borough’s concrete landscapes into greener, healthier areas to live, creating a greener London with — and for — Londoners.

# 951

COMMUNITY AND CORPORATE VOLUNTEERS ATTENDED OUR PLANTING AND MAINTENANCE DAYS ACROSS VICTORIA PARK, WEAVERS FIELDS AND BETHNAL GREEN GARDENS.

Trees for Cities has a long-standing relationship with Tower Hamlets Council and the borough’s residents. Tower Hamlets is a key target area of ours, with one of the lowest tree canopy cover densities across all of London. We continued greening Tower Hamlets during the 2022/23 planting season at Victoria Park, Weavers Fields and Bethnal Green Gardens, where communities gathered to connect with nature and plant trees!

At Victoria Park, one of London’s most popular green spaces,

103 heavy standard trees were planted, including 41 London Planes, selected for their ability to adapt to urban conditions and resist air pollution. This was accomplished with the invaluable help of 347 volunteers across five planting days. Of the 43 volunteers who we surveyed, 95% said they learnt something or developed new skills about planting and looking after urban trees.

Over six planting days at Weavers Fields and Bethnal Green Gardens, 58 heavy standard

## THANKS TO OUR FUNDERS

- Tower Hamlets Council
- Forestry Commission
- The Nineveh Charitable Trust
- Tower Hill Trust
- American Express
- All Aboard Shops LTD
- M7 Real Estate Sterling — One Day Global partner

GREENING THE GREY

# GLASGOW CITY REGION



direct delivery involvement through our Urban Canopy Coordinator who is based in the area.

Working across 5 of the identified 16 target neighbourhoods, we developed community and school links to ensure projects were delivered by the people who would benefit most from the trees.

Delivery was split over two days for each location; a school planting day followed by a community planting day, so that children who attended with their school could come back with their families.

Looking ahead to next season, we are growing our work in the area and aiming to deliver in more target neighbourhoods. Beyond this, we are bringing our schools programme to the Glasgow City Region with new Edible Playground projects, and our Trees for Climate Action project will support engagement activities throughout our work going forward.

## THANKS TO OUR FUNDERS

- National Lottery Community Fund
- Golden Acre Foods
- Bollinger

## THANKS TO OUR PARTNERS

- Clyde Climate Forest
- The Green Action Trust
- The Conservation Volunteers
- East Renfrewshire Council
- South Lanarkshire
- North Lanarkshire
- West Dunbartonshire
- East Dunbartonshire

# 3,365

TREES PLANTED IN PARTNERSHIP WITH THE CLYDE CLIMATE FOREST.

The Clyde Climate Forest is a tree planting initiative in Glasgow City Region with a target to see 18 million trees planted over the next ten years; that's ten trees for every person living in the region. 16 target neighbourhoods have been identified by the Clyde Climate Forest as areas which will be affected by climate change, due to factors such as the urban heat island effect and flooding. Planting trees in these areas will help reduce these effects.

Having supported the initiative since the first trees went in the ground in 2020/21 season, this was our first year of support where we had



INSPIRING THE NEXT GENERATION

# RAYNHAM PRIMARY SCHOOL



Raynham Primary School in the heart of Enfield is one of three 'Trees for the Jubilee' Playground flagship projects across England, Scotland and Wales; a lasting legacy for The Queen's Platinum Jubilee. With the school being located in a densely populated area contributing to poorer air quality and limited green space, the new healthy playground helps counteract that. Complete with a food growing area and orchard as well as treasured trees, a seating area and more, the space provides enriching environmental learning opportunities for its 700+ pupils and staff.

To mark the Jubilee Playground and the launch of our 'Trees for Schools' strategy,

we hosted a celebratory tree planting event at Raynham Primary. Funders, guests and mixed groups of pupils from across the school rolled up their sleeves and helped plant four new heavy standard trees, plus perennial and vegetable plants.

Trees for Cities incorporated pupils' wishes into the playground, such as areas for storytelling and colourful flowers, and also worked with them to help map the project. Pupils were actively involved in planting, for example strategically planting climbers next to Raynham Avenue to redirect the flow of pollution from the playground and create green screening. Training school staff creatively has been key to the playground's

“ WE ARE EXTREMELY HAPPY WITH THE OUTDOOR LEARNING ENVIRONMENT THAT TREES FOR CITIES HAS HELPED US TO CREATE AND UPGRADE, BUILT IN COLLABORATION WITH OUR PUPILS AND THEREFORE ENCOMPASSING THEIR VIEWS AND IDEAS. THE PROJECT HAS ENRICHED OUR LEARNING SPACES FOR OUR CHILDREN, AND THEY ARE NOW AN INTEGRAL PART OF OUR SCHOOL ENVIRONMENT. ”

Lead Teacher at Raynham Primary School



success, sharing techniques for tree identification and poetry writing in the sensory garden.

Deputy Headteacher Iveta Bejaoui has been very passionate and present throughout the whole project, working with children and staff to maintain and make full use of their green space. During a gardening club, pupils plant herbs and fruit plants for use in the school canteen; from plant to plate! Pupils from across different year groups plant and tend to their vegetable growing space according to the season, from fruit bushes in winter and spring to green beans in the summer. The playground makes everyday connection to nature more accessible at Raynham, and with that a raft of health, wellbeing and education opportunities.

## THANKS TO OUR FUNDERS

- The Mohn Westlake Foundation
- Enfield Council (Greater London Authority's Superzones Project)
- Raynham Primary School

INSPIRING THE NEXT GENERATION

# ABBEY MEAD PRIMARY ACADEMY



discharged directly into the main drainage system around the school. This includes a rain garden next to the playground, four climate resilient trees, lots of evergreen grasses and sensory planting, and three playful bridges to cross from one play area to another. A woodland seated area has revitalised a previously problem muddy area,

and awareness of the water cycle, flood awareness, climate change, habitats and SuDS. Bug hunts, seed sowing and plug planting provided unique outdoor learning experiences.

Today, art, geography, English/literacy, maths, science and PSHE are taught in the outdoor project space. It's also utilised



“ AT TREES FOR CITIES, WE PUT NATURE-BASED SOLUTIONS AT THE CORE OF TACKLING THE CLIMATE CRISIS AND BELIEVE IN THE POWER OF TREES TO TRANSFORM NEIGHBOURHOODS. THIS PROJECT AIMS TO CAPTURE AND TAKE ADVANTAGE OF THE VAST AMOUNTS OF RAINWATER RUNOFF FROM THE PLAYGROUND AND RECYCLE IT TO WATER AND FEED TREES AND LARGE AREAS OF PLANTING. WHILST REDUCING THE URBAN HEAT EFFECT OF THE PLAY AREA, IT CREATES ENGAGING, EDUCATIONAL AND HABITAT-RICH SPACES WITHIN THE SCHOOL. ”

Grace Walker, Landscape Design Manager at Trees for Cities

now home to four trees that capture excessive rain and use it to grow shade-loving plants.

After completion, four educational workshops were delivered to three year 5 classes in partnership with Leicester City Council, to actively engage pupils and increase their understanding

for extracurricular activities such as gardening club, and provides a safe sanctuary for Special Educational Needs support such as one-to-one sessions. As the space is embedded into day-to-day school life, the lead teacher is confident the project space will be sustained over the next five years — and hopefully beyond!



# 1000M<sup>2</sup>

OF RAINWATER CAN BE POTENTIALLY CAPTURED BY THE RAIN GARDEN.

Trees for Cities has been instrumental in partnering with Leicester City Council after the Department for Education gave a grant to build Sustainable Drainage Systems (SuDS) in 3 Leicester City schools. The flagship of these schools is Abbey Mead Primary Academy. Trees for Cities and Leicester

City Council transformed the school grounds to reduce surface water flooding, enhance outdoor learning, and improve pupil and staff health and wellbeing.

The design incorporates excavated and built features in the playgrounds to reduce and redirect the surface water being

## THANKS TO OUR FUNDERS

- Leicester City Council
- Tokio Marine HCC

## THANKS TO OUR PARTNERS

- Severn Trent Water
- Wildscapes Cooperative

INSPIRING THE NEXT GENERATION

# TOWN FARM PRIMARY SCHOOL



Trees for Cities implements Planting Healthy Air projects at schools in areas of high air pollution, redesigning playgrounds with a focus on improving air quality and increasing biodiversity. One such school is Town Farm Primary School in Staines, 1km away from Heathrow Airport's runways where planes have an immense impact on pollution levels.

Each class at the school was encouraged to plant a standard tree and be responsible for its maintenance, with pupils having had the chance to eat fresh berries grown in the fruit-growing area and see wildflowers grow in specially designed beds. Year 5 pupils have monitored the air pollution around their school grounds, learning about the effects of pollution and



“ THE STAFF FROM TREES FOR CITIES AND MAPPING FOR CHANGE HAVE ACTIVELY ENCOURAGED OUR PUPILS TO WANT TO BE OUTSIDE AND LOOK AFTER OUR ENVIRONMENT. ”

Lead Teacher at  
Town Farm Primary School

the impact that trees and other plants have on reducing air pollution, in partnership with Mapping for Change. Pupils shared their findings with the rest of the school through posters and creative storytelling, and wrote letters to their local MP.

This Planting Healthy Air project has created a whole host of benefits: a green space with green infrastructure that the children can play on, fruit trees and bushes that have allowed them to learn about food growing and where fruit comes from, and increased opportunities for outdoor learning. The air pollution monitoring exercises have enabled interactive and scientific education, bolstered by lesson plan resources for teachers. The space itself provides an environment that can improve the mental and physical health of the pupils and staff.

The sensory garden has inspired imaginative stories amongst Year 5 pupils — they took the Trees for Cities mascot Rowan the Hedgehog into their outdoor space, and have written about his adventures there surrounded by trees, flowers, plants and insects!



## THANKS TO OUR FUNDERS

- Town Farm Primary School
- Forestry Commission: Urban Tree Challenge Fund
- British United Provident Association (BUPA)
- Argo Global

## THANKS TO OUR PARTNERS

- Mapping for Change

# INSPIRING THE NEXT GENERATION CARDIFF SCHOOLS



**100%**

**OF SCHOOLS INCORPORATE  
PROJECTS RELATED TO THEIR  
HEALTHY PLAYGROUNDS INTO  
TERMLY CURRICULUM PLANS.**

Every healthy playground we create is bespoke to the needs of the school, staff and pupils, and provides an interactive welcoming space for outdoor learning. Two Cardiff primary schools we've worked with are no exception: Ysgol Gynradd Gymraeg Pen-y-Groes (joint with Bryn Celyn Primary), and Windsor Clive Primary School now have greener spaces and edible playgrounds that are incorporated into the termly school curriculum.

Last year we engaged both schools with the aim to equip them with the skills and knowledge to optimise outdoor learning and maintain their playgrounds. At Ysgol Gynradd Gymraeg Pen-y-Groes, Trees for Cities held a dual language outdoor session where pupils learnt how to identify the new trees and existing hedging in the school grounds in English and Welsh. They explored the new fruit orchards and identified apples, pears, quince, and

crab apple trees, and learnt how living willow plants are grown into domes and shapes. As well as playing inside of the willow sculptures, pupils were taught how to maintain these spaces and water them during the summer term.

Windsor Clive Primary School's play area has been transformed into a healthy playground featuring fruit and veg planters and a beautiful pond, where biodiversity thrives. The pupil's introduction to their

new green space included a survey of plants, insects and animals already living in garden space, discussing the different habitats discovered. Groups of children have since visited to weed, plant new fruit and veg, and sow seeds for summer crops. The pupil's connectedness to their healthy playgrounds has been reported in results from a Lead Teacher Survey, where 100% of lead teachers believe the projects are either very important or important to pupils.



**“ IT IS SIMPLY VITAL THAT WE LEARN TO GROW AND NURTURE PLANTS. UNDERSTANDING WHERE FOOD COMES FROM AND HOW TO PREPARE IT AS WELL AS BIODIVERSITY AND KEEPING THE DELICATE BALANCE OF OUR EARTH SAFE. PARENTS ARE BEGINNING TO SEE MORE OF THE BENEFITS WITH CHILDREN TRYING OUT NEW FOODS. ”**

Lead Teacher at Cardiff primary school

## THANKS TO OUR FUNDERS

- The Mohn Westlake Foundation
- All Aboard Charity Shops Limited
- Benefact Group — Movement for Good Awards
- Cardiff Council
- Generation Foundation
- Windsor Clive Primary School
- Ysgol Gynradd Gymraeg Pen-y-Groes
- Bryn Celyn Primary School
- Guardian

## THANKS TO OUR PARTNERS

- Grow Cardiff



# INSPIRING THE NEXT GENERATION SCHOOL FOREST GARDEN KENYA



The first practical session in the three schools was getting the nurseries established, which involved measuring and establishing nursery beds and sowing seeds. Subsequent activities included preparing the raised beds for when the sowed seeds were ready to be transferred, and composting using organic material to help plants grow. Pupils and staff learnt how to make natural fertilisers to enhance plant growth: bokashi fertiliser, made during the fermentation process, and through vermicomposting, where earthworms convert waste material into compost.

Another important part of the training was in biopesticide preparation and application, to manage pests and diseases and give the plants the best chance at survival. The pupils also engaged in other activities equally important to best-maintaining their nurseries, including watering, weeding, harvesting, mulching and fencing the demo farms.

COSDEP reports that the project has largely been a success, and together we look forward to a long-term partnership for even greater impact.



“ THE TRAINING HELPED ME KNOW MORE ABOUT PLANTS, HOW TO CARE FOR THEM, AND HOW TO PLANT HEALTHY CROPS FOR THE COMMUNITY. WHAT I ENJOYED MOST WAS LEARNING HOW TO PLANT CROPS USING SAFE MATERIALS AND WITHOUT CHEMICALS. ”

Pupil at Gacharage Primary School



84.

TREES PLANTED IN MARCH 2023 ACROSS THE THREE KENYAN SCHOOLS FROM A RANGE OF SPECIES.

250

PUPILS ENGAGED IN PROMOTING ORGANIC GARDENING AND TREE PLANTING IN SCHOOLS.

In partnership with Trees for Cities, the Community Sustainable Development Empowerment Programme (COSDEP) rolled out school gardening and tree planting projects at three primary schools in Kiambu, Kenya. Pupils and staff at Gacharage Primary School, Muchatha Primary School and Karura Kanyungu Academy participated in a variety of activities, from nursery preparation and planting through to natural fertiliser making. Overall, 250 pupils helped to plant 844 trees across the three schools. In addition to this, COSDEP reports that children also learnt about a variety of organic gardening techniques.

## THANKS TO OUR FUNDERS

- Allan and Nesta Ferguson Charitable Trust

## THANKS TO OUR PARTNERS

- Community Sustainable Development Empowerment Programme (COSDEP)
- Ernst & Young LLP
- AHMM



CONNECTING THE NATION TO TREES

# TREE CITIES OF THE WORLD



The Tree Cities of the World programme — led by Food and Agriculture Organization of the United Nations and the Arbor Day Foundation — recognises cities and towns across all continents that meet core standards for the care and planning of urban trees and forests. Trees for Cities is leading the initiative to recruit and support cities throughout

the UK to apply for designation, and we have been encouraging and supporting councils to achieve the award.

We were delighted that 21 UK Tree Cities of the World were recognised in 2022 — the most to date — for ensuring that their urban forests and trees are properly maintained, sustainably managed, and duly celebrated.

The award acknowledges that the selected cities serve as part of the solution to many of the global issues we face today, and are committed to building a healthy city now and for the future.

In May 2022, Trees for Cities attended the 24th European Forum on Urban Forestry to speak about Tree Cities of the World in the UK and how it has helped partners unlock funding. This includes our work in Bradford, one of the UK's first Tree Cities of the World.



**TREES ARE IMPORTANT TO PEOPLE, NO MATTER WHAT COUNTRY THEY ARE FROM OR WHAT LANGUAGE THEY SPEAK. WE ALL WANT TO LIVE IN A CITY THAT IS HEALTHY, RESILIENT, AND BEAUTIFUL — TREES SERVE AS A COMMON LANGUAGE TO MAKE THAT POSSIBLE. BEING RECOGNISED IN THE TREE CITIES OF THE WORLD PROGRAMME MEANS THAT YOUR CITY IS COMMITTING TO GO ABOVE AND BEYOND TO DEFINE TREES AS CRITICAL GREEN INFRASTRUCTURE FOR YOUR CITIZENS.**

Dan Lambe, Chief Executive of the Arbor Day Foundation



Following a successful 2022–23 season, Trees for Cities is looking forward to the upcoming World Forum on Urban Forests which will bring together all global lead partner organisations for the Tree Cities of the World programme. We are excited to see the ever-growing network of UK Trees for Cities of the World expand, and share this with an international audience.

## THANKS TO OUR PARTNERS

- Arbor Day Foundation
- Food and Agriculture Organization of the United Nations

## CONNECTING THE NATION TO TREES

# TREES FOR STREETS



# 1,658

TREES WERE PLANTED  
NATIONALLY VIA  
TREES FOR STREETS  
SPONSORSHIPS

Trees for Streets is the national community-led street tree initiative. We make it easier for residents to donate towards local street tree planting, and take an active role in their after-care. Up and down the country, people have discovered how empowering it is to green up their own street, either on their own or collaborating with a group of neighbours.

We're now working with 18 local authorities, including Leeds,

Bristol and Cambridge, and a third of London boroughs, and are constantly being contacted by new councils looking to find out about the scheme. During the 2022-23 season we raised funding for 1,975 large street trees. These are instant impact trees which are 7+ years old when planted.

We've experienced a lot of media interest. Trees for Streets was featured on BBC Points West, with a story where residents worked to restore

an avenue of trees in Bristol. Conservationist, Tom Heap, featured the project on Sky's Climate Show, whilst the Guardian covered our #WateringWednesday campaign which aims to get the nation out watering their young street trees.

Early this year we celebrated with a group of residents in South Tottenham who managed to crowdfund 18 trees (as shown in the header photo of this page). Their street previously had none.



**“ WE ARE SIGNATORIES OF THE UK ARCHITECTS DECLARE INITIATIVE AND WE HAVE PLEDGED TO RAISE AWARENESS AND ADVOCATE LOW CARBON PRINCIPLES IN OUR BUILDINGS TO TACKLE THE TWIN CRISES OF CLIMATE CHANGE AND BIODIVERSITY LOSS. WE ARE DELIGHTED TO BE ABLE TO CONTRIBUTE TO THE GREENING OF OUR LOCAL AREA TO HELP MITIGATE BOTH OF THESE ISSUES. ”**

David Tucker, Trees for Streets sponsor & Director at Rivington Street Studio

Their hard work will transform a grey polluted street into a green verdant space; a wonderful legacy that will be a continuing source of civic pride. There is just one of many street communities to use our platform as a way to green-up where they live.



## THANKS TO OUR FUNDERS

- Green Recovery Challenge Fund: Department for Environment, Food & Rural Affairs, Natural England, Environment Agency, Forestry Commission and The National Lottery Heritage Fund
- Players of People's Postcode Lottery: Postcode Green Trust
- City Bridge Trust
- Mayor of London

## CONNECTING THE NATION TO TREES

# THE QUEEN'S GREEN CANOPY



Following the passing of Her Majesty Queen Elizabeth, we partnered with The Queen's Green Canopy to develop commemorative planting activities in five towns and cities across England: Brighton, Portsmouth, Blackpool, Stockton and Ipswich. Leaving a lasting legacy for Her Majesty Queen Elizabeth, we planted thousands of trees across the five locations, with the help of incredible volunteers. This included whip planting to create urban woodland habitat, standard tree planting to form

majestic avenues, and fruit trees for community orchards, parks, schools, housing estates and public open spaces.

Brighton, Portsmouth and Stockton were all part of our Forgotten Places programme, which focused on increasing the canopy cover of coastal areas that need it most. In Portsmouth our planting delivered much-needed new green infrastructure to schools, enabling pupils to plant a tree and learn about the value and benefits of trees.

With Blackpool having one of the lowest areas of urban canopy cover in the UK (according to Forest Research), new tree planting as part of this project can help the town reach its 10% canopy cover target. New trees also took root across multiple sites throughout Stockton for the town's residents to benefit from.

In Ipswich, one of our Tree Cities of the World, we are delighted that 70 standard trees planted at Murray Park have been recognised by the council as The Queen's Avenue in Her Majesty Queen Elizabeth's honour! To help plant the commemoration trees in Ipswich, communities from various walks of life came together, from the newly-formed Tree Wardens, families, local residents, friends of park groups and local businesses.



**“ I HAD A GREAT TIME! IT WAS SO INFORMATIVE AND FUN, AND IT FELT SO GOOD TO GIVE BACK TO THE COMMUNITY AND ENVIRONMENT IN THIS WAY. A GREAT WAY TO SPEND THE DAY. ”**  
Volunteer at Brighton planting day



## THANKS TO OUR PARTNERS

- The Queen's Green Canopy
- Department for Environment Food and Rural Affairs
- Associated British Ports
- Bollinger
- The Palm Beach Institute

## CONNECTING THE NATION TO TREES

# THE MASKED DANCER



We were excited to be officially named as a charity partner of ITV's 'The Masked Dancer' in season 2 of the popular show. Featuring a panel of famous faces trying to piece together clues and dance moves to 'unmask' 12 celebrities, Trees for Cities and Argonon Productions created a tailored social media campaign designed to raise awareness about the benefits of urban trees on physical and mental wellbeing.

Shortlisted in the Charity Times Awards 2022 for its innovative approach, the #UrbanTreesUnmasked Twitter and

Instagram campaign ran for an eight-week broadcasting schedule. This engaged new and existing supporters with intriguing clues and riddles to 'unmask' a different urban tree species and vital benefit to improve people's lives in towns and cities.

In addition to the social media campaign, exclusive and limited edition water

bottles, available via The Masked Dancer UK website, were designed by the show's famous panel: Jonathan Ross (whose bottle is shown in the photo), Davina McCall, Peter Crouch, Joel Dommett and Oti Mabuse. Funds raised from each purchase helped plant more urban trees in local communities and support our vital work in the UK and around the world.

“ MY MASKED DANCER NOTEBOOK AND SEEDS ARRIVED IN YESTERDAY'S POST AND I'M DELIGHTED. I LOVE THE SHOW AND HAVE ALWAYS WANTED A NOTEBOOK JUST LIKE THE PANELLISTS, AND I REALLY LOOK FORWARD TO PLANTING MY SEEDS IN SPRING. VERY INSPIRED BY YOUR CONTENT AND LOOKING FORWARD TO MORE OF IT. THANK YOU SO MUCH! ”

One of our #UrbanTreesUnmasked campaign winners

## THANKS TO OUR PARTNERS

- Argonon Productions



© ITV/Bandicoot TV

# BUSINESS IMPACT



We would like to say a particular thank you to all of our corporate partners who have supported us over the year. Our partners have worked with us through cause-related marketing, project sponsorship, employee volunteering, donations and plenty in-between. Trees for Cities has a range of projects and our corporate partners have supported them across the board. We simply would not have been able to achieve what we have the past year without the support of all our partners.

We are not able to tell the story of every partner here, although they are all as important to us. Here are some examples of how our partners have supported us.

## ASSOCIATED BRITISH PORTS

Associated British Ports (ABP) operate 21 ports throughout the UK. ABP partnered with Trees for Cities to plant 21,000 new urban trees in multiple coastal locations around the UK, representing their 21 ports, and supporting both our Forgotten Places initiative and in partnership with the Queen's Green Canopy.

## HAYS SPECIALIST RECRUITMENT

Hays Specialist Recruitment partnered with Trees for Cities to plant a tree for every work placement they made. Not only that, their employees engaged in tree planting and other environmental activities in locations all over the UK.



Employees from Hays Specialist Recruitment at our Horsenden Hill planting event

## GOLDEN ACRE FOODS

Golden Acre helped us plant 14,032 urban woodland creation trees as well as enabling us to plant 243 more mature standard trees in Glasgow, Newcastle and Bexley. Standard trees are amongst the most difficult projects to gain funding for.

## MOJU

MOJU is unique in that they support our projects, and also commit 100% of their workforce to helping us with our work. The Planting Healthy Air in Schools MOJU contributed towards last season was visited by Mayor of London Sadiq Khan at an event celebrating the playground.



Mayor of London Sadiq Khan visiting the Planting Healthy Air project that MOJU supported

## IG

IG is a premier sponsor of our Trees in Schools programme, committing to a multi-year partnership. They have enabled us to plant trees in 8 schools, whilst also providing us with the means to develop capacity building materials that we engage the pupils and teachers with.

## GETT TAXI

Gett Taxi is also a great multi-year partner of Trees for Cities, and this year sponsored tens of thousands of trees to create four new urban woodlands in areas of need across London.

## AMERICAN EXPRESS

American Express helped us with a large project in Tower Hamlets, whilst their employees also gave their time to help with environmental projects across London and in Brighton.



A group of American Express employees at a Victoria Park planting day

## BLOOMBERG

Bloomberg is Trees for Cities' longest-standing corporate partner. They have continued to support our Planting Healthy Air in Schools programme, as well as engaging hundreds of employees to support Trees for Cities. This has included planting and caring for trees in London, as well as supporting our international work.



Bloomberg employees mulching at Roding Valley Park, Essex

## BRITISH UNITED PROVIDENT ASSOCIATION (BUPA)

BUPA raised funds for Trees for Cities with a Healthy Cities challenge, encouraging their employees to walk 6,000 steps a day, and matching funds raised to go to good causes. BUPA enabled us to support four schools in and around the four cities their offices are located, funding school projects best fit for each playground.

## CLEAR CHANNEL

Clear Channel is a long-term partner of ours, and they have continued to support Trees for Cities through our Trees for Streets and Edible Playground programmes.

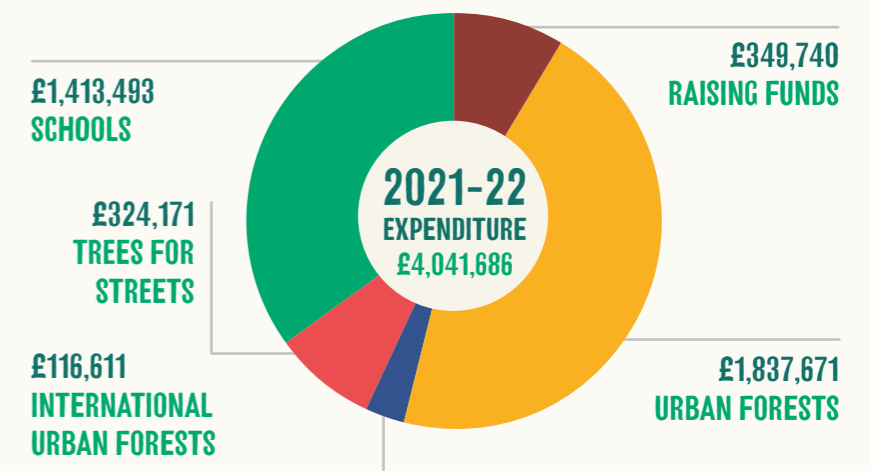
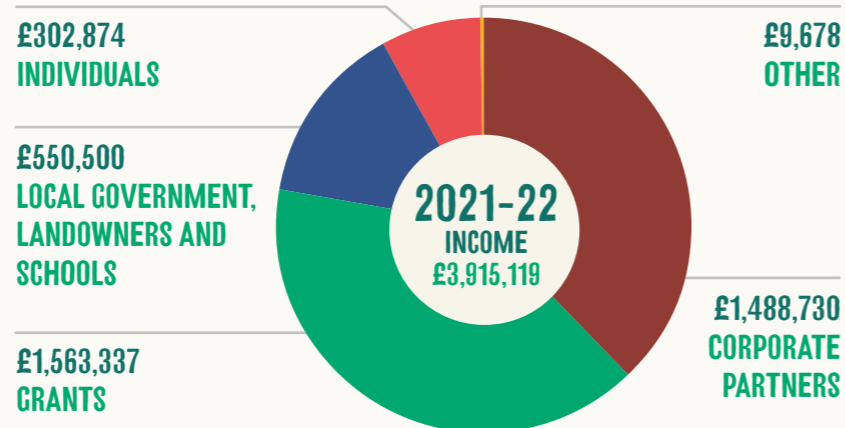
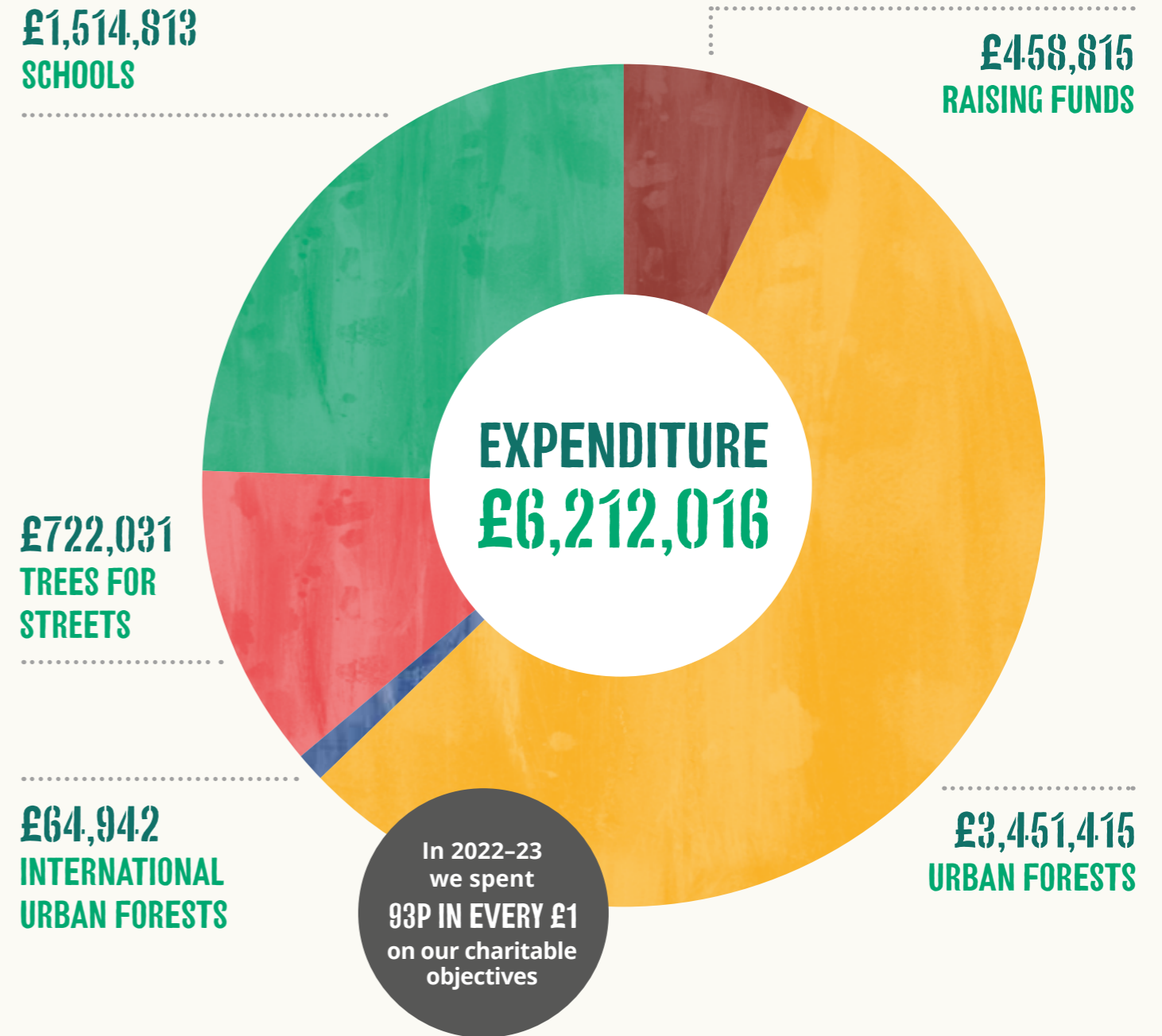
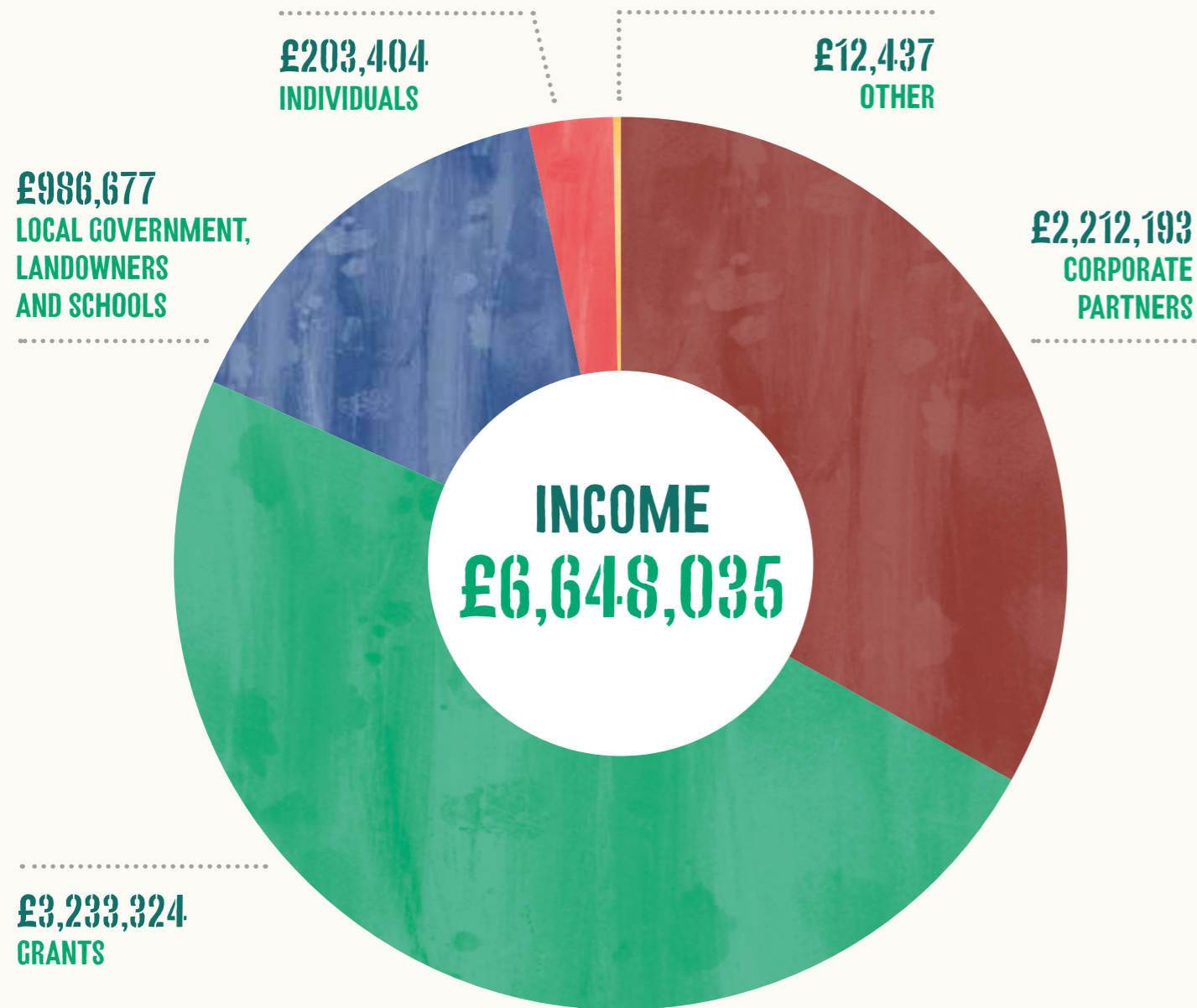
## AXA UK PLC AND G. F SMITH

AXA UK plc and G. F Smith both took the rewarding approach of planting a number of trees for each of their employees. They also committed to engaging their employees in planting and caring for trees.



AXA employees at Redbridge Recreation Ground in Ilford

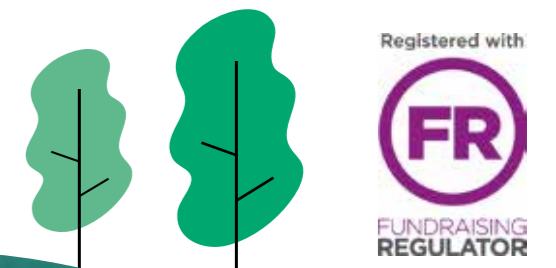
# OUR FINANCIAL SUMMARY



Sayer Vincent, Chartered Accountants and Statutory Auditor, Invicta House, 108-114 Golden Lane, London EC1Y 0TL

# SUPPORTERS AND PARTNERS

We are hugely grateful to the following organisations and individuals for their generosity. It is their support that enables us to cultivate lasting change in towns and cities.



## £10,000 AND ABOVE

Accept and Proceed Ltd  
All Aboard Charity Shops Limited  
All Saints Educational Trust  
Ash Field Academy  
Associated British Ports  
Assured Guaranty UK Limited  
AXA  
Benefact Group's Movement for Good Awards  
Bloomberg L.P.  
Bollinger  
Bristol City Council  
British United Provident Association (BUPA)  
Burger King UK (BK UK Group Limited)  
Cardiff Council  
City Bridge Trust  
City of Bradford Metropolitan District Council  
Clear Channel UK Limited  
Department for Environment, Food & Rural Affairs (DEFRA): Green Recovery Challenge Fund — administered via the National Lottery Heritage Fund  
Double Verify via Arbor Day Foundation  
East Sussex County Council  
Enterprise via Arbor Day Foundation  
Ernst & Young LLP

Festival Republic Ltd  
Forestry Commission  
G F Smith  
Golden Acre Foods  
Greater London Authority  
Groundwork  
GT Gettaxi (UK) Ltd  
Haringey Council  
Hays  
IG Index Limited  
Investec Bank plc  
Investigo  
IX Marketing Limited  
John Swire 1989 Charitable Trust  
JP Morgan  
King Baudouin Foundation  
United States — on behalf of American Express  
Leicester City Council  
Logicor Europe Limited  
London Borough of Ealing  
London Borough of Enfield  
London Borough of Harrow  
London Borough of Hillingdon  
London Borough of Lewisham  
London Borough of Redbridge  
London Borough of Tower Hamlets  
London Community Foundation — QBE Climate Fund

M7 Real Estate Sterling via One Day Global  
Mark Petterson  
Merton Borough Council  
Metal Developments Ltd — Woodwarm Stoves  
MOJU Ltd  
National Lottery Community Fund — Bringing People Together  
National Lottery Community Fund — Reaching Communities  
Ocado Retail Limited  
Olive & Orange Ltd (Brand: Orla Kiely)  
Postcode Green Trust — Players of the People's Postcode Lottery  
Raymond James  
Robert Browning Primary School  
Rogers Stirk Harbour & Partners  
RSM UK Foundation  
ShareGift (The Orr Mackintosh Foundation Limited)  
Sutton Tuition & Reintegration Service  
The Allen & Overy Foundation  
The Generation Foundation  
The Hippy Shake  
The Hiscox Foundation  
The Kusuma Trust  
The Mohn Westlake Foundation  
The Queen's Green Canopy  
The Reed Foundation  
Tokio Marine HCC  
Verizon via Arbor Day Foundation  
Windsor Clive Primary School

## £1,000-£9,999

1973  
Abbey Mead Primary Academy  
Aligne  
AMHH  
Antac Support Services  
ArgoGlobal  
Artemis Charitable Foundation  
Augustine Courtauld Trust  
Barnet Borough Council  
Bedford Borough Council  
Black and Blum  
Blackheath Primary School  
BOC  
Bowes Primary School  
Bryn Celyn Primary School  
Bryn Hafod Primary School  
BY Development Limited (Link City)  
Caldecote Primary  
Cambridge City Council  
Cayley Primary School  
Charles S French Charitable Trust  
Christ Church Academy  
Christian Smith  
Claire Burrows  
Clive Self  
Cobb Charity  
Community Foundation Tyne & Wear and Northumberland (The Opencast Charitable Fund)  
Coop Academy Princeville  
Coventry City Council  
Craig West Turf Landscape Supplies  
Croydon Council  
Cycas Lower Marsh Ltd  
Duncan Robertson  
Ecosia  
Elephant Box  
Elevation Advisors LLP  
Essential Trading  
FEA  
Fedex via Arbor Day Foundation  
Fedrigoni UK  
Fowler Smith and Jones Trust  
Frizinghall Primary School  
Glan Morfa School  
Glan Yr Afon Primary School

Gloucestershire County Council  
Grangetown Primary  
Green Park  
Greenway Primary School  
Hambrough Primary  
Heathrow Community Trust — Environment and Sustainability  
Herbert Thompson School  
Herrick Primary School  
Holyhead Primary Academy  
HomeMade Digital  
Horizon  
Hubspot  
HUEL  
Impact on Urban Health  
Inside Out Contracts Ltd  
Ipsos  
Islington Borough Council  
Jim Atwood  
JTP Solutions  
Kate's Kitchen  
King George V Primary School  
Latymer All Saints CofE Primary School  
Lili Giacobino  
Live Nation (Music) UK Limited  
Llanederyn Primary School  
Lloyd's of London Foundation  
London Borough of Bexley  
London Power  
LVMH Fragrance Brands  
Mahalo via ActionFunder  
Make Ltd  
Meadowbank Primary School  
Natures Aid  
Netflix  
NU Construction  
OneTreePlanted  
P2G Contract Support, LLP  
Palmer Hargreaves (Bosch)  
Panorama Antennas  
Partners Group (UK)  
Pen Y Bryn  
Queensmead Primary Academy  
Raynham Primary School  
Recorra Ltd

Red Inc Paper  
Riddlesden St Mary's School  
Rivington Street Studio  
Salesforce  
Sapling Spirits  
Sensory Trust  
Seven Mills Primary School  
Sheffield City Council  
Sims Metal  
Sovereign Health Care  
Span Trust  
St Alban's RC Primary School  
St John Lloyd RC Primary School  
St Luke's C of E Primary School  
St Marys Fields School  
Stanley Smith (UK) Horticultural Trust  
TemCo Services  
The Allan & Nesta Ferguson Charitable Trust  
The Chartered Institute of Public Finance & Accountancy  
The Daniell Trust  
The Harroddian School  
The Hollies School  
The Nineveh Charitable Trust  
The Sandra Charitable Trust  
The Shanly Foundation  
Thornhill Primary School  
Tower Hill Trust  
Town Farm Primary School  
Trowbridge Primary School  
Upton Cross Primary School  
UV&S  
VIOOH Ltd  
Visa  
Water-Plus  
Wizard Works Limited  
Wonderland Agency Ltd  
Wonersh Village  
WPJ Heating  
Wycliffe CofE Primary  
Ysgol Bro Eirwg School  
Ysgol Gynradd Gymraeg Pen-y-Groes  
Ysgol Pen Y Pil  
Ysgol Y Wern School

## SPECIAL THANKS

A huge thanks to the players of the People's Postcode Lottery for their continued support.







# GET IN TOUCH

020 7587 1320

[INFO@TREESFORCITIES.ORG](mailto:INFO@TREESFORCITIES.ORG)

VOLUNTEER [TREESFORCITIES.ORG](https://www.treesforcities.org)

FOLLOW [@TREESFORCITIES](https://www.instagram.com/treesforcities)

Trees for Cities, Prince Consort Lodge,  
Kennington Park, Kennington Park Place,  
London SE11 4AS